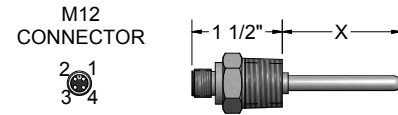
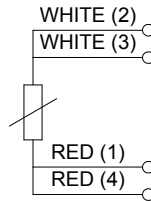
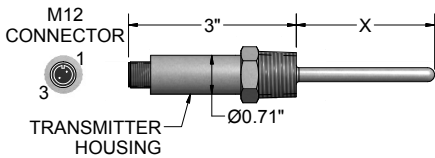
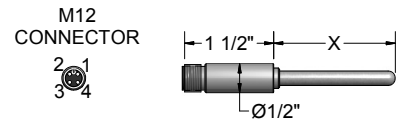
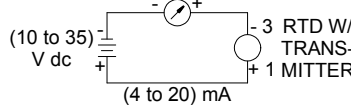
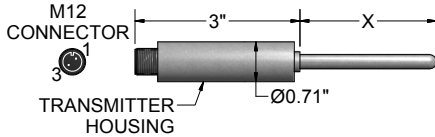


These RTD Assemblies house an optional Series 450 Temperature Transmitter (no connection head is required) that is ideal for monitoring temperature in small areas such as tanks and pipes. The water-tight construction meets the NEMA 6P, IP68 Protection Rating requirements. Standard units include a sensor, an M12 process connection housing, and optional transmitter. The transmitter is a 2-wire unit with an analog output. It has measurement input for Pt100 resistance thermometers (RTD) in 4-wire connections. Transmitters can be ranged from (-51 to 160) °C [-60 to 320] °F. With a 10 °C [18 °F] minimum span requirement. **The ambient temperature limits for the M12 connector is (-40 to 85) °C.**



## ORDER CODES

**Example Order Number:** **1** **R1T185L** **2** **484** - **3** **06** - **4** **00** - **5** **C45, T** - **6** **450** - **7** **U** - **8** **S(0-200)** **9** **F**

### 1 Pt100 (α=0.003 85 °C<sup>-1</sup>) RTD Assemblies

CODE	TOLERANCE <sup>[1]</sup>
R1T185L	Grade B
R3T185L	Class AA
R5T185L	(1/5) Class B
RAF185L	Class A
RBF185L	Class B

[1] Refer to RTD tolerance information in the General information section for calculations to determine specific tolerance at temperature. See Instrument Section for total sensor and transmitter output accuracy.

### 2 316 S.S. Sheath

CODE	DIAMETER O.D. (inches)
284	1/8
384	3/16
484	1/4

### 3 Immersion Length "X"

Specify "X" length in inches using 2 digits, plus any fractional length desired. EXAMPLE: 04 = 4", 04(1/2) = 4.5"

### 4-1 Sheath Fittings

CODE	DESCRIPTION
00	No Fitting

### 4-2 Re-Adjustable Compression Fittings

CODE	DESCRIPTION	NPT (inches)	AVAILABLE SHEATH DIAMETERS (inches)
12A	Stainless Steel	1/8	1/8, 3/16
12B	Stainless Steel	1/4	3/16, 1/4
12C	Stainless Steel	1/2	1/8, 1/4
19C	Spring-loaded SS well fitting	1/2	3/16, 1/4

FEP gland standard 204 °C [400 °F] max.

### 4-3 One-Time Adjustable Compression Fittings

CODE	DESCRIPTION	NPT (inches)	AVAILABLE SHEATH DIAMETERS (inches)
05A	Stainless Steel	1/8	1/8, 3/16, 1/4
05B	Stainless Steel	1/4	1/8, 3/16, 1/4
05C	Stainless Steel	1/2	1/8, 1/4

### 4-4 316SS Fixed Bushings<sup>[1]</sup>

CODE	MOUNTING THREAD NPT (inches)	AVAILABLE SHEATH DIAMETERS (inches)
8A__	1/8	1/8, 3/16, 1/4
8B__	1/4	1/8, 3/16, 1/4
8C__	1/2	1/8, 3/16, 1/4
8D__	3/4	1/8, 3/16, 1/4

[1] Requires Table 5 - Option 45 Selection

When ordering fixed bushings, specify order code above plus insertion length "U", as measured from hot tip to bottom of threaded bushing. EXAMPLE: code 8A06 is 1/8" NPT, 316 SS bushing located 6" from hot tip.

### 5 M12 Connector Termination

CODE	DESCRIPTION
45	No process connection
C45	1/2" NPT process connection
B45	1/4" NPT process connection
D45	3/4" NPT process connection

### OPTIONAL TRANSMITTER

T	4 to 20 mA Temperature Transmitter (Requires Table 6 selection)
---	-----------------------------------------------------------------

### 6 Transmitter

CODE	DESCRIPTION
450-00	Programmable transmitter-unconfigured
450	Programmable transmitter-configured

### 7 Fault Signal

CODE	DESCRIPTION
U	Upscale burnout
D	Downscale burnout

### 8 Range

CODE	DESCRIPTION
S	(lower limit - upper limit)

### 9 Units

CODE	DESCRIPTION
C	Celsius
F	Fahrenheit