

Easy-to-Use HMI Software Saves Time by Creating Useful Interfaces in Minutes

SpecView software from Watlow® is an easy-to-use Human Machine Interface (HMI) to Watlow controllers, including EZ-ZONE® integrated controllers and third-party products. Watlow's single point of support for hardware, software and application needs ensures knowledgeable and expedient response to questions or concerns.

SpecView from Watlow is commercially accepted and price competitive compared with third-party options. Throughout its history, field-proven features and functions have been added based on customer suggestions. SpecView's built-in support and auto-detect for Watlow controllers is an advantage compared to tag-based systems. Since there is no need to learn intricate details about communication protocols, setup is quick and simple.

Process adjustments and machine troubleshooting are easily accomplished using graphed data on trend charts. SpecView from Watlow is designed for industrial needs, including built-in compatibility with bar code readers and touch screens. Customizing displays for specific applications reduces process errors. Flexible features include data logging, an historical replay option, easy-to-use recipes and remote access options.

To try before purchase, SpecView from Watlow is available to download and run in the time-limited demo mode.

SPECVIEW



Features and Benefits

Watlow EZ-ZONE® Standard Bus communications protocol

- Communicates with any EZ-ZONE product without requiring purchase of a communications option

Built-in support and auto-detect for controllers

- Saves set-up time
- Eliminates the need to learn communications protocols
- Integrates devices from multiple vendors

Flexible data logging and report generator

- Helps users comply with regulatory requirements including AMS 2750D NADCAP
- Reduces labor and increases accuracy by automating data collection for chosen parameters
- Adds data acquisition to existing processes
- Saves time by exporting data to Excel®-compatible spreadsheet files
- Allows data to be grouped in user-defined batches
- Incorporates measurements, operator comments and other information into report formats
- Records operator actions

Easy-to-build, customizable screens

- Allows simple custom screen editing
- Simplifies monitoring and adjusting controller parameters
- Reduces errors by making displays application-specific
- Decreases training time
- Integrates sophisticated third-party elements with ActiveX container option
- Automates many tasks with user-defined buttons
- Calls attention to specific parameter values with user-set color dynamics
- Allows touch screen compatibility
- Provides bar graphs for 'at-a-glance' monitoring
- Limits access with passwords if desired

Features and Benefits (Continued)

Alarm manager

- Simplifies understanding alarms with customizable, plain-text messages
- Aids in troubleshooting by time stamping and logging alarms

Easy-to-use recipe manager

- Saves snapshot of current parameter settings
- Reproduces previous machine setups exactly
- Reviews and edits complex programmer profiles
- Eliminates operator error in setting machine parameters

Remote access option

- Allows multiple operator stations with identical interfaces for convenient access
- Provides multiple password-protection levels
- Improves access over LAN, modem or internet
- Reduces maintenance and repair downtime
- Increases utilization

System Requirements

Compatible Operating Systems:

- Windows® 8 (all versions)
- Windows® 7 (all versions)
- Windows® Vista (all versions)
- Windows® Server 2003
- Windows® XP (Home and Professional)
- Windows® 2000 (Workstation and Professional)
- Windows® NT 4.0
- Windows® ME, Windows® 98
- Windows® 95 (help not supported)

Minimum System:

- Pentium® processor or equivalent Celeron® or AMD
- 64MB RAM (128MB or more recommended)
- 30MB hard disk space to install SpecView from Watlow
- Additional disk space for data logging
- Instrument connection: serial port or Ethernet
- USB port for the key

Ideal System:

- Pentium® 4 (or Celeron® or AMD equivalent) 2.0Ghz
- 256MB RAM
- 80GB hard disk

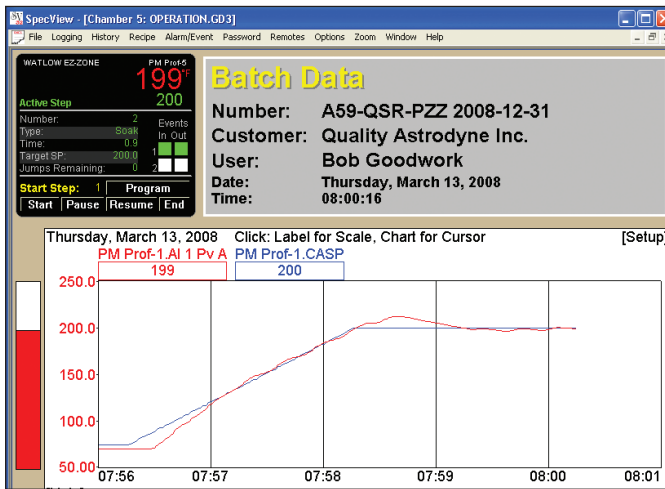
Supported Controllers and Protocols

Controller \ Controller's Communication Protocol	Standard Bus	Modbus® RTU	Modbus® TCP
EZ-ZONE PM	✓	✓ ^①	✓ ^①
EZ-ZONE RM	✓	✓ ^①	✓ ^①
EZ-ZONE ST	✓	✓ ^①	✓ ^①
SERIES F4 Ramping	N/A	✓	N/A
SERIES 96, 97, SD	N/A	✓	N/A
POWER SERIES	N/A	✓	N/A
MICRODIN	N/A	✓	N/A
SERIES 986, 987, 988, 989	N/A	✓	N/A
CLS200 (standard or ramp/soak)	N/A	✓	N/A
MLS300 (standard or ramp/soak)	N/A	✓	N/A

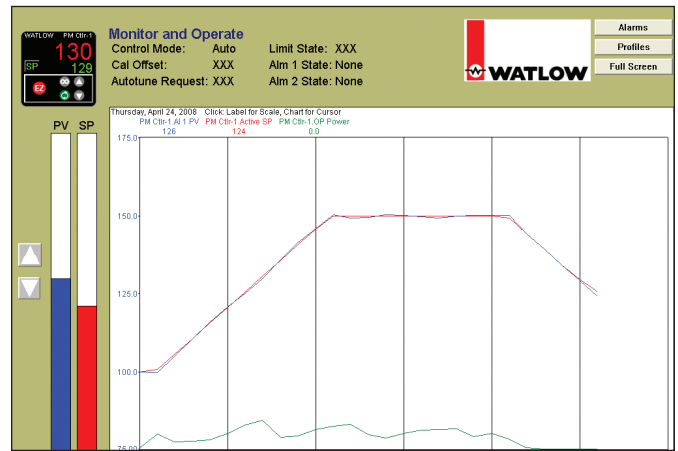
^① Modbus® support for basic operation parameters is included. Automatic detection of EZ-ZONE instruments is not available via Modbus® so configurations must be set up manually. EZ-ZONE ST controllers versions 1 to 3 are supported via Modbus® with an RUI Gateway only.

How to Choose the Correct SpecView from Watlow Options

Order this option....	If you want to....
Mini Version	Operate a system with data from one or two simple instruments. This option includes historical replay and allows up to two instruments. Note that in some cases, devices such as profiling and multi-loop controllers are represented by more than one instrument, the mini version may not be appropriate.
Standard Version	Be free to expand configurations beyond the two instrument limit of the mini version.
Single Port	Communicate with instruments on only one serial communications port or only via Ethernet only.
Multiple Port	Communicate with instruments on more than one serial communications port and via Ethernet.
Historical Replay	Replay logged data on screens in trends, bar graphs and numeric fields. Without the option, replay is limited to the last four hours of data.
Strategy Controller	Configure SpecView from Watlow to respond automatically to events such as specific parameter values with actions such as printing the screen, starting logging or download a recipe. Events can also be time or calendar based. Without the strategy controller option there is a two event limit.
DDE	Integrate SpecView from Watlow with other Windows® programs.
OPC Client	Connect SpecView from Watlow to instruments via a third-party OPC server.
ActiveX Container	Integrate third-party or customer-written ActiveX controls into SpecView from Watlow.
Remote Users	Monitor instruments from multiple computers simultaneously. Order the number of remote users corresponding to the maximum number of additional computers needed to connect simultaneously.
SERIES F4 Programmer Driver	Use the computer to manage profiles: program profiles in the computer, save profiles on the computer, or download profiles that are saved on the computer to the SERIES F4.
Allen-Bradley® DF1 Driver	Connect to Allen-Bradley® PLCs (process logic controllers) that support the DF1 protocol



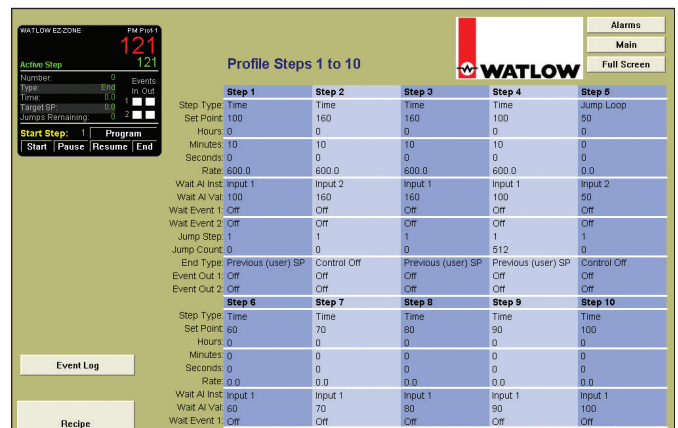
Track and report batch-specific processing data.



Graph and log process data. Replay data that may have been missed while a user was away. For playback of data older than four hours get the historical replay option.



Create application-specific screens that depict process data so users can relate.



Make screens with most often used parameters. Enable recipe management to reduce operator errors when setting values.

Ordering Information - Standard

Part Number

①	②	③	④	⑤	⑥	⑦	⑧	⑨	⑩	⑪	⑫	⑬
SV	S			Historical Replay & Strategy Cont.	DDE and OPC	ActiveX Container	Remote Users		Special Watlow Drivers	Third Party Drivers		00

③	Version
S =	Standard

④	Ports
S =	Single
M =	Multiple

⑤	Historical Replay and Strategy Controller
0 =	None
H =	Historical replay
S =	Strategy controller
B =	Both

⑥	DDE and OPC
0 =	None
D =	DDE
C =	OPC client
B =	Both

⑦	ActiveX Container
0 =	None
A =	ActiveX container

⑧ ⑨	Remote Users
00 =	None
XX =	Number of simultaneous remote users (01 to 99)

⑩	Special Watlow Drivers
0 =	None
1 =	SERIES F4 programmer

⑪	Third Party Drivers
0 =	None
1 =	Allen-Bradley® DF1

Note: Special drivers for other third-party products (Honeywell, Eurotherm, Mitsubishi, Yokogawa and Marathon) are available directly from SpecView.

Ordering Information - Mini

Part Number

① ②	③	④	⑤	⑥	⑦	⑧ ⑨	⑩	⑪	⑫ ⑬
	Version	Ports	Historical Replay & Strategy Cont.	DDE and OPC	ActiveX Container	Remote Users	Special Watlow Drivers	Third Party Drivers	
SV	M								00

③ Version	
M =	Mini (limited to two instrument views)
Note: The mini version is limited to two instrument views and may not be appropriate for use with some devices such as profiling and multi-loop controllers where a single device appears as multiple instruments in SpecView.	

④ Ports	
S =	Single
M =	Multiple

⑤ Historical Replay and Strategy Controller	
H =	Historical replay
B =	Historical replay and strategy controller

⑥ DDE and OPC	
0 =	None
D =	DDE
C =	OPC client
B =	Both

⑦ ActiveX Container	
0 =	None
A =	ActiveX container

⑧ ⑨ Remote Users	
00 =	None
XX =	Number of simultaneous remote users (01 to 99)

⑩ Special Watlow Drivers	
0 =	None
1 =	SERIES F4 programmer

⑪ Third Party Drivers	
0 =	None
1 =	Allen-Bradley® DF1
Note: Special drivers for other third-party products (Honeywell, Eurotherm, Mitsubishi, Yokogawa and Marathon) are available directly from SpecView.	

Ordering Information - Upgrade

Part Number

① ②	③	④	⑤	⑥	⑦	⑧ ⑨	⑩	⑪	⑫ ⑬
	Version	Ports	Historical Replay & Strategy Cont.	DDE and OPC	ActiveX Container	Remote Users	Special Watlow Drivers	Third Party Drivers	
SV									00

③ Version	
U =	No version change; upgrade options only
N =	Upgrade mini to standard

④ Ports	
0 =	No upgrade
M =	Multiple

⑤ Historical Replay and Strategy Controller	
0 =	No upgrade
H =	Historical replay (already included with SpecView Mini)
S =	Strategy controller
B =	Both (do not order this option with SpecView Mini)

⑥ DDE and OPC	
0 =	No upgrade
D =	DDE
C =	OPC client
B =	Both

Note: Your upgrade order must be accompanied by the Step 1 code from the Upgrade screen in SpecView from Watlow. Use the upgrade order form available at www.watlow.com or upon request from Watlow or your authorized distributor.

⑦ ActiveX Container	
0 =	No upgrade
A =	ActiveX container

⑧ ⑨ Remote Users	
00 =	No upgrade
XX =	Number of simultaneous remote users (01 to 99)

⑩ Special Watlow Drivers	
0 =	No upgrade
1 =	SERIES F4 programmer

⑪ Third Party Drivers	
0 =	No upgrade
1 =	Allen-Bradley® DF1
Note: Special drivers for other third-party products (Honeywell, Eurotherm, Mitsubishi, Yokogawa and Marathon) are available directly from SpecView.	

Watlow® and EZ-ZONE® are registered trademarks of Watlow Electric Manufacturing Company.

Modbus® is a registered trademark of Schneider Automation Incorporated.

Windows® and Excel® are registered trademarks of the Microsoft Corporation.

Allen Bradley® is a registered trademark of Rockwell Automation®.

Pentium® and Celeron® are registered trademarks of Intel Corporation.

To be automatically connected to the nearest North American Technical Sales Office:

1-800-WATLOW2 • www.watlow.com • inquiry@watlow.com

International Technical Sales Offices: Australia, +61 3 9335 6449 • China, +86 21 3532 8532 • France, +33 1 41 32 79 70
 Germany, +49 (0) 7253 / 9400-0 • India, +91 40 6661 2700 • Italy, +39 02 4588841 • Japan, +81 3 3518 6630 • Korea, +82 2 2628 5770
 Malaysia, +60 3 8076 8745 • Mexico, +52 442 256 2200 • Singapore, +65 6773 9488 • Spain, +34 91 675 1292
 Taiwan, +886 7 288 5168 • United Kingdom, +44 (0) 115 964 0777